



UNIT 2 REVIEW

Theism



The 5 Pillars

- Shahada: the confession of faith, “There is no God but Allah and Muhammad is His prophet
- Salat: prayer 5 times a day facing Mecca
- Zakat: giving 2.5% of their income to the poor
- Sawm: fasting during the month of Ramadam
- Hajj: all Muslims are expected to make a pilgrimage to Mecca in their lifetime

Islam

- Never died, taken up by Allah
- Not part of the Trinity
- Not God
- Was not crucified or resurrected
- He was a prophet
- Fully human

Both

- Birth announced by angels
- Virgin birth
- Performed miracles
- Sinless
- Never died, taken up by Allah
- Appointed to return in end times.

Christianity

- Died and resurrected; taken up by God
- part of the Trinity
- Son of God
- Crucified to atone for our sins
- Prophet, priest, and King
- Fully God and fully human

How does Islam answer the 4 big questions?

- **Creation:** Created by Allah; slaves of Allah and His vice-regents on earth
- **Fall:** humans are in rebellion to Allah; Adam and Eve were not significant
- **Redemption:** submit to Allah and practice the 5 pillars of Islam
- **Eternity:** go to Paradise or hell depending on deeds; only martyrdom guarantees Paradise

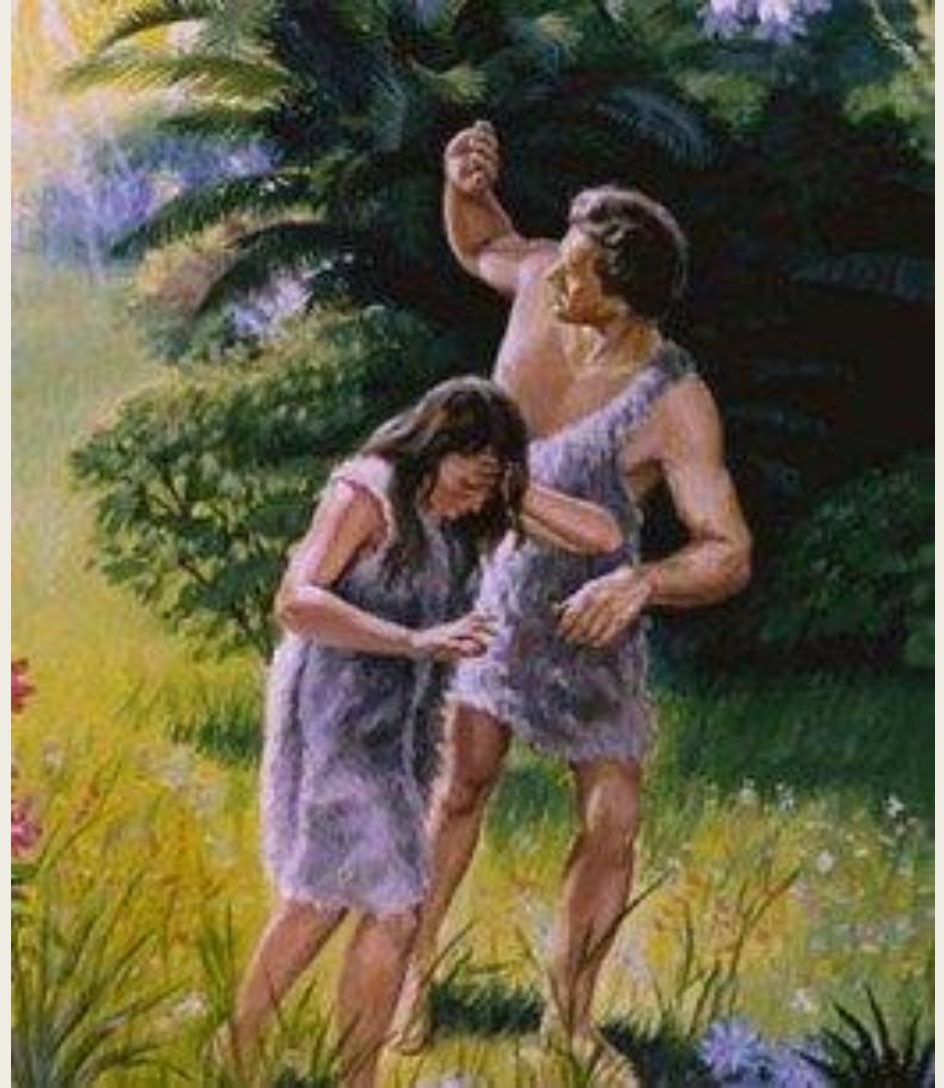
Creation

How did I and
everything else
get here?



The Fall

What went
wrong with the
world?



Redemption

How can the
world be fixed?



Eternity

Where do I go
when I die?



How does Christianity answer the four big questions?

- **Creation**: We are created by a personal God who is transcendent. We are made in His image.
- **Fall**: Sin entered the world through the first humans; humans are sinful people in need of redemption
- **Redemption**: We can't fix it; we can only be redeemed by the death, burial, and resurrection of Jesus Christ
- **Eternity**: We will spend eternity with God in heaven, or separated from God in hell

General revelation

- God's revealing of Himself through nature
- Special revelation: God's revealing of Himself through the Bible and the life of Jesus

Psalm 50:21

- *²¹ You have done these things, and I kept silent;
you thought I was just like you.
But I will rebuke you
and lay out the case before you.*

God is personal

- The universe we experience suggests an intelligent, purposeful, and personal designer.
- The biblical God created humans in “His own image.”
- We cannot bend God to our expectations (Psalm 50:21)

John 14:6-9

- *⁶ Jesus told him, “I am the way, the truth, and the life. No one comes to the Father except through me. ⁷ If you know me, you will also know^{[a](#)} my Father. From now on you do know him and have seen him.”*
- *⁸ “Lord,” said Philip, “show us the Father, and that’s enough for us.”*
- *⁹ Jesus said to him, “Have I been among you all this time and you do not know me, Philip? The one who has seen me has seen the Father. How can you say, ‘Show us the Father’?”*

God has made himself known

- God is transcendent: beyond and separated from the world
- God is immanent: in the world
- God made Himself visible in the person of Jesus Christ.

Cosmological argument



Whatever begins to exist *has a cause*.



The universe began to exist.

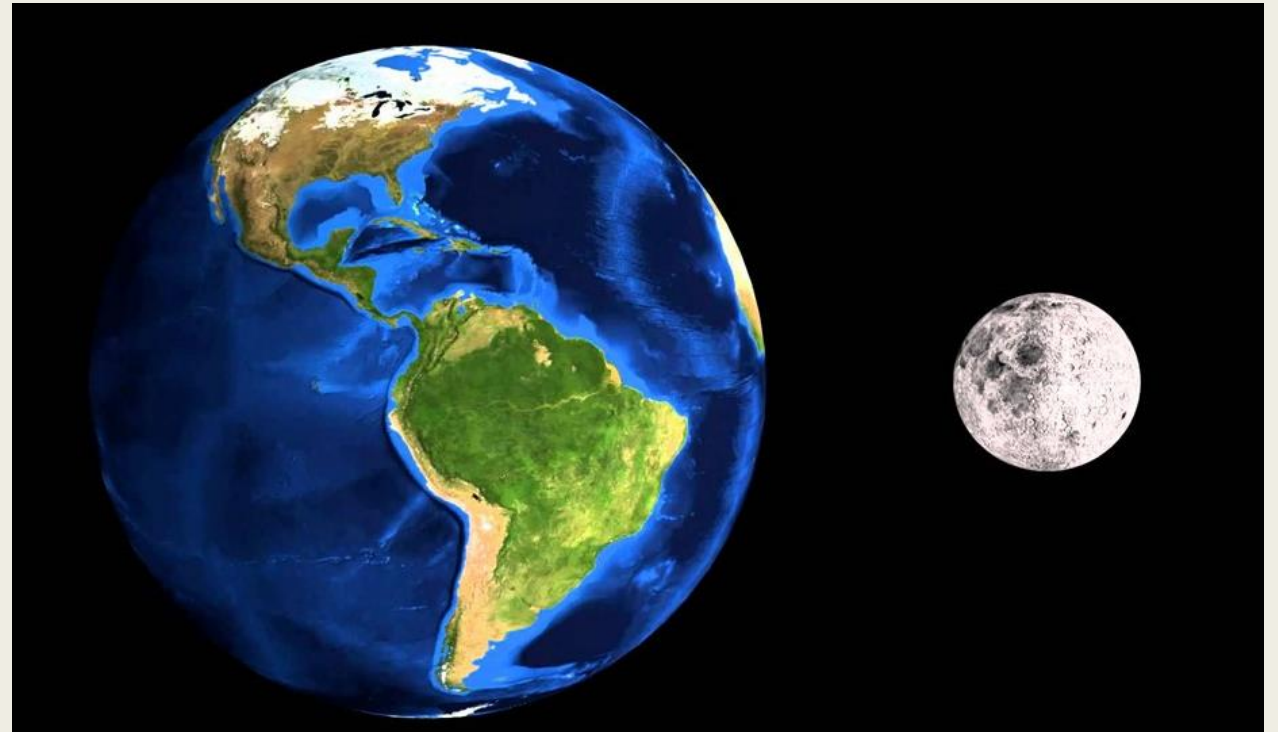
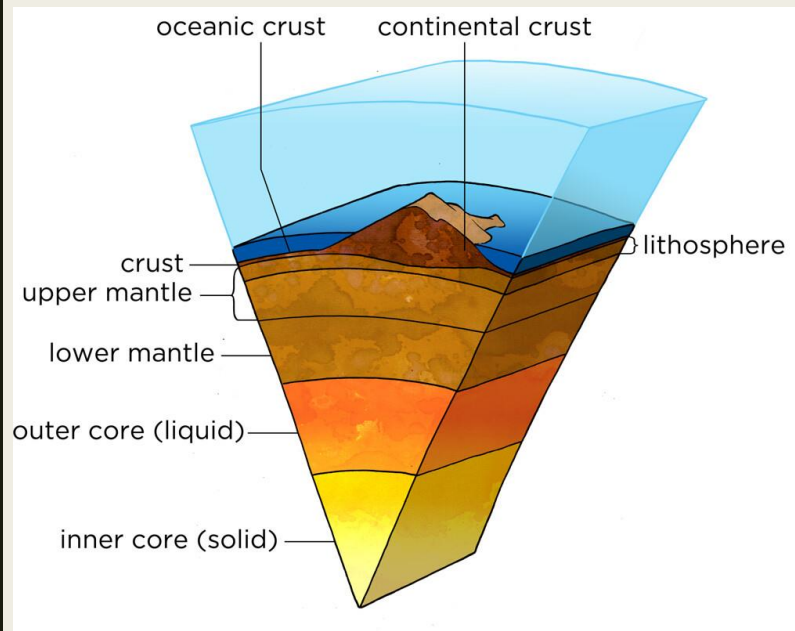


Therefore, the universe *has a cause*.

Fine tuning of the universe

- The earth's relationship to the sun and moon
- The earth's atmospheric conditions
- The earth's terrestrial nature

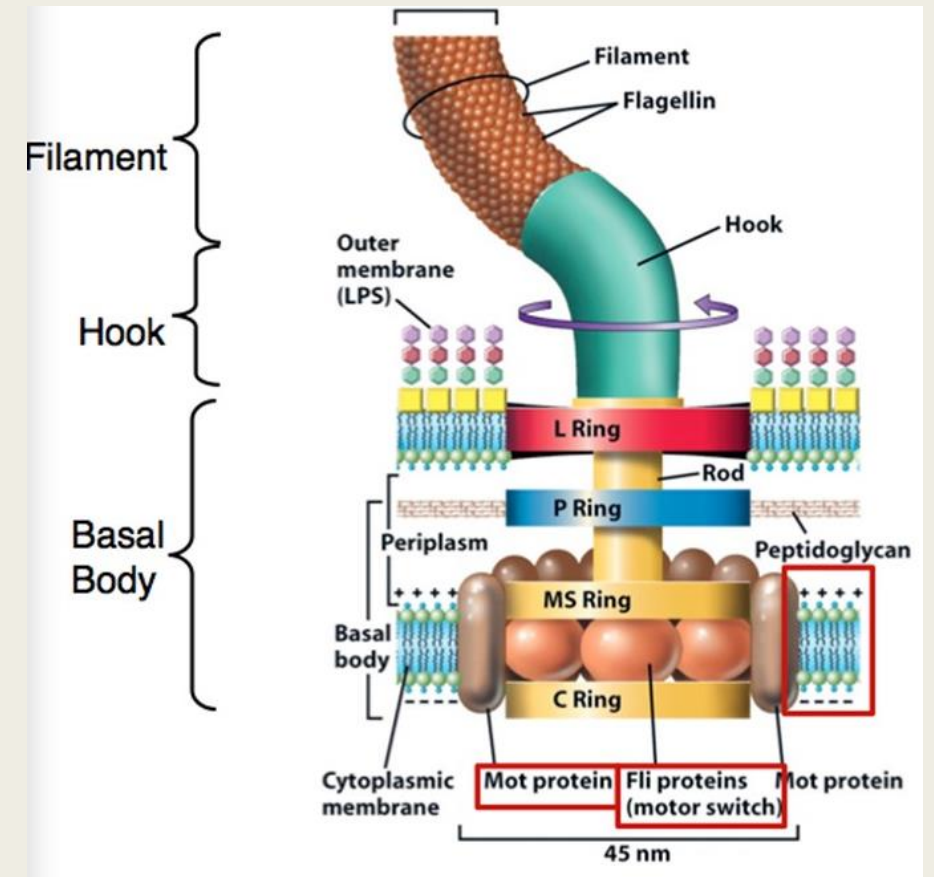
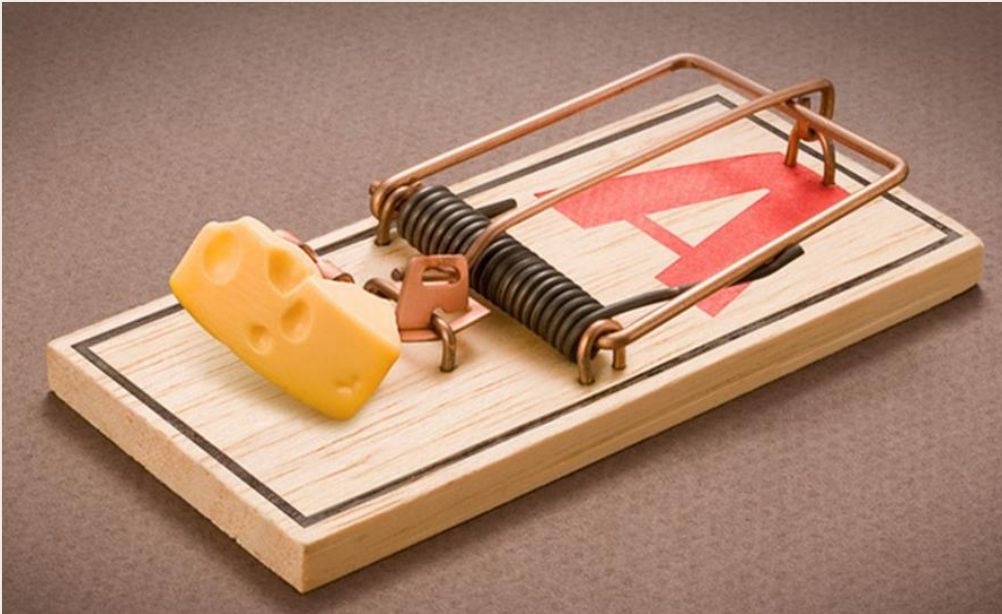
Fine tuning of the universe



Irreducible complexity

- A system made up of many well matched, interacting parts that contribute to the function of the system.
- Removing any one of these parts causes the system to stop functioning
- Examples; blood clots, bacterial flagellum

Irreducible complexity



Specified complexity

- Does this show an identifiable pattern of design?
- Can it be produced by natural causes?
- Is it highly improbable?

specified complexity



Anthropic principle

- The universe is uniquely designed for human life



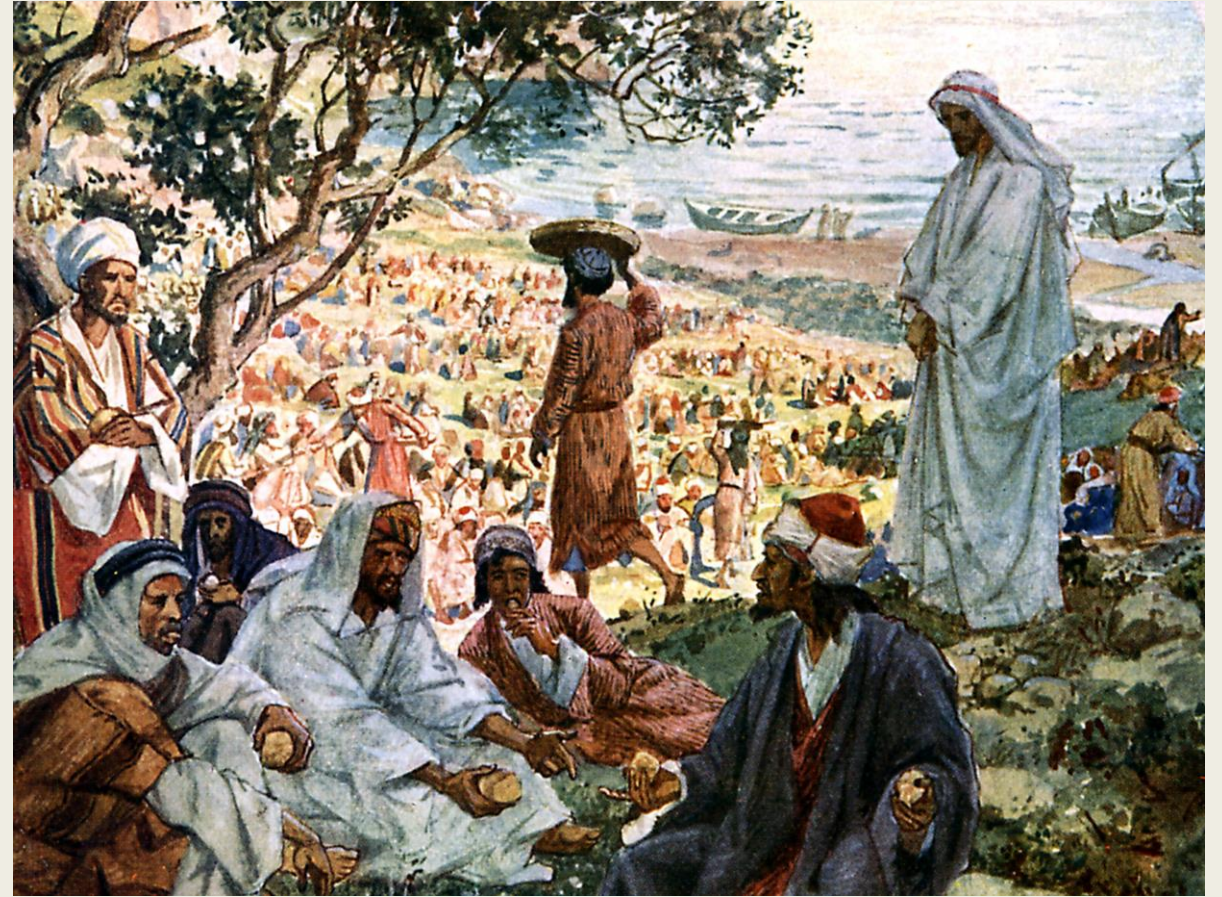
SAME

- The Bible has been consistently passed down and transcribed to us for centuries. The copies we have can reconstruct the original to over 99% accuracy.



HISTORICALLY ACCURATE

- The names and places mentioned in the Bible are real



ARCHAEO- LOGICALLY VERIFIED

- Archaeology has verified the historicity of the Bible



ARCHAEO- LOGICALLY VERIFIED

- Archaeology has verified the historicity of the Bible



RELIABLE MANUSCRIPTS

- The number of reliable manuscripts far exceeds that of any other ancient document



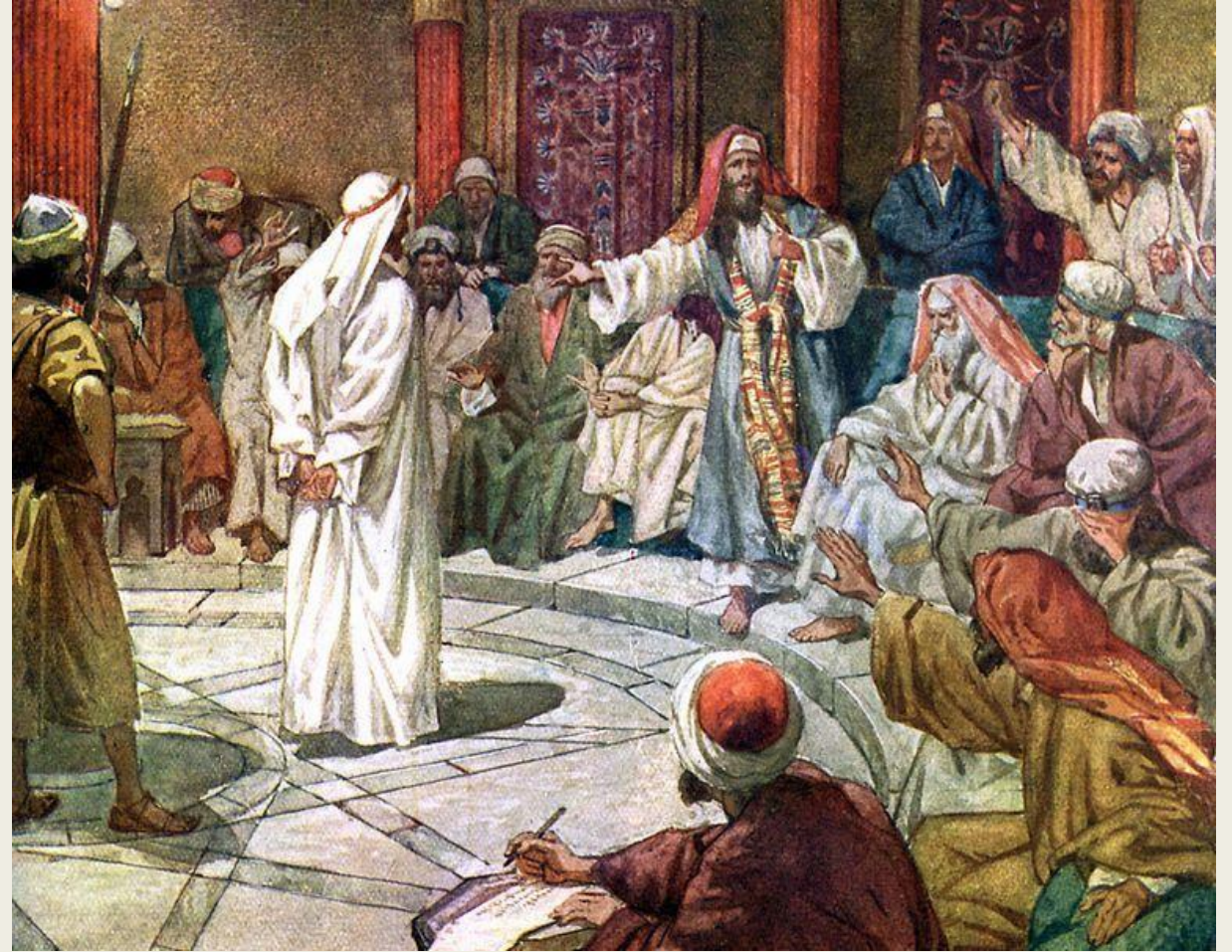
PROPHETIC

- Numerous predictions made in the Bible have been fulfilled throughout history



EXTRAORDINARY IMPACT

- Scripture has powerfully altered the lives of people and nations



RELEVANT

- Scripture gives timeless insights into the nature of God and humanity.



Sin is....

- Rebellion against God
- Missing the mark
- Crossing God's boundaries
- A failure to let God be God



- Today we struggle between two viewpoints
- Utopian Theory
- Original Sin

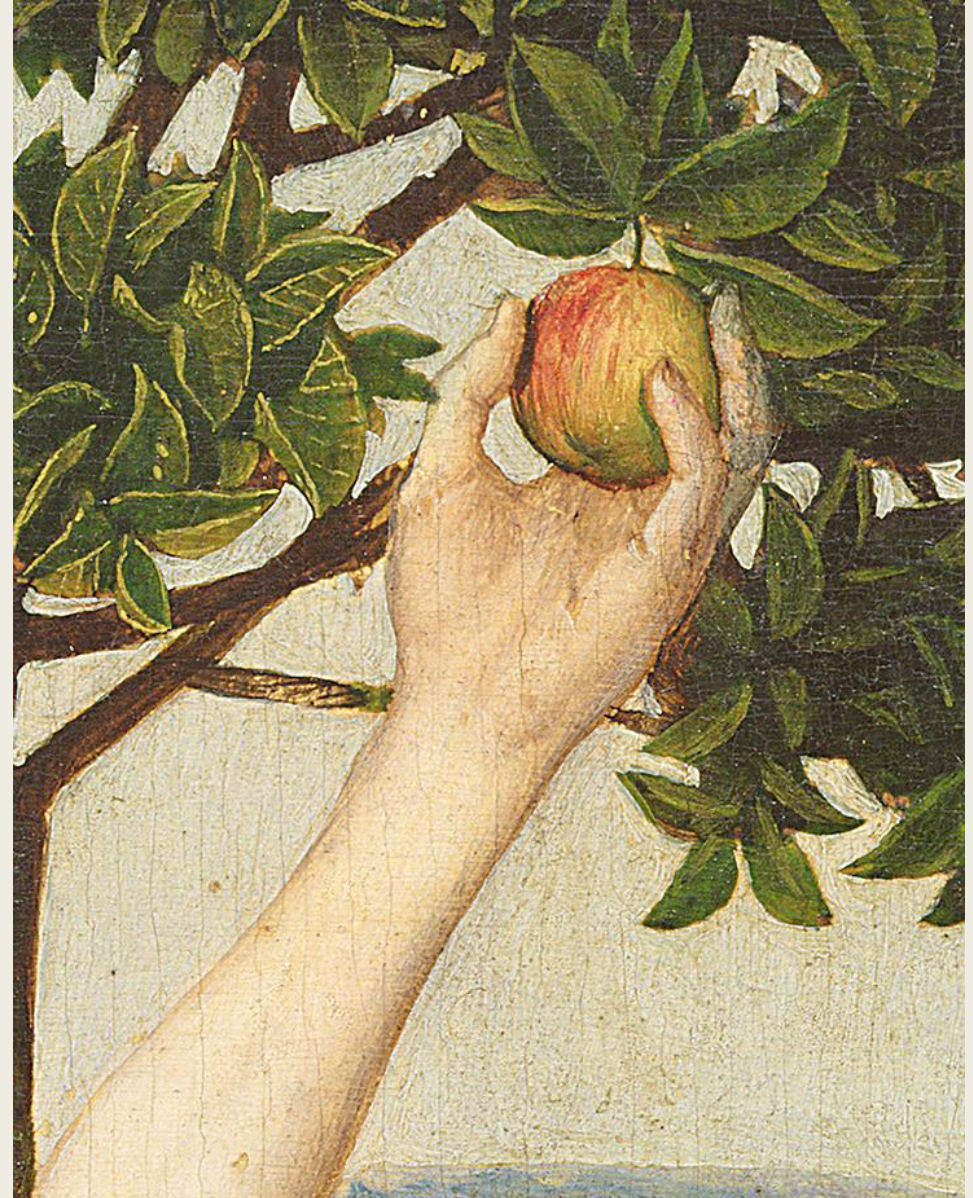
Utopian Theory

- The view that believes humans are basically good and, under the right social conditions, their goodness will emerge



Original sin

- Because of the first sin, humans are morally corrupt and have a natural inclination to do wrong



What is the gospel?

- We have all sinned and are in need of redemption
- Romans 3:23

- Sin brings eternal separation from God
- Romans 6:23a

What is the gospel?

- God offers eternal life through the gift of Jesus
- Romans 6:23b

- God showed He loved us by dying on the cross
- Romans 5:8

What is the gospel?

- You must confess that Jesus is Lord and believe He rose from the dead

■ *If you confess with your mouth, “Jesus is Lord, and believe in your heart God raised Him from the dead, you will be saved.*

■ *Romans 10:9-10*

**GOD'S
DESIGN**



