

---

# THEISM

## LESSON 6: CHRISTIANITY: CREATION



# GENERAL REVELATION

- God's revealing of Himself through nature

## PSALM 19:1-6

- *The heavens declare the glory of God, and the sky proclaims the work of His hands. Day after day they pour out speech; night after night they communicate knowledge. There is no speech, there are no words; their voice is not heard. Their message has gone out to all the earth, and their words to the ends of the world. In the heavens He has pitched a tent for the sun. It is like a groom coming from the bridal chamber; it rejoices like an athlete running its course. It rises from one end of the heavens and circles to the other end; nothing is hidden from its heat.*

## ROMANS 1:18-20

- *For God's wrath is revealed from heaven against all godlessness and unrighteousness of people who by their unrighteousness suppress the truth, since what can be known about God is evident among them, because God has shown it to them. For His invisible attributes, that is, His eternal power and divine nature, have been clearly seen since the creation of the world, being understood through what he has made. As a result, people are without excuse.*

## ROMANS 2:14-15

- *So, when Gentiles, who do not have the law, instinctively do what the law demands, they are a law to themselves even though they do not have the law. They show that the work of the law is written on their hearts. Their consciences confirm this. Their competing thoughts will either accuse or excuse them....*



# COSMOLOGICAL ARGUMENT



**Whatever begins to exist *has a cause*.**

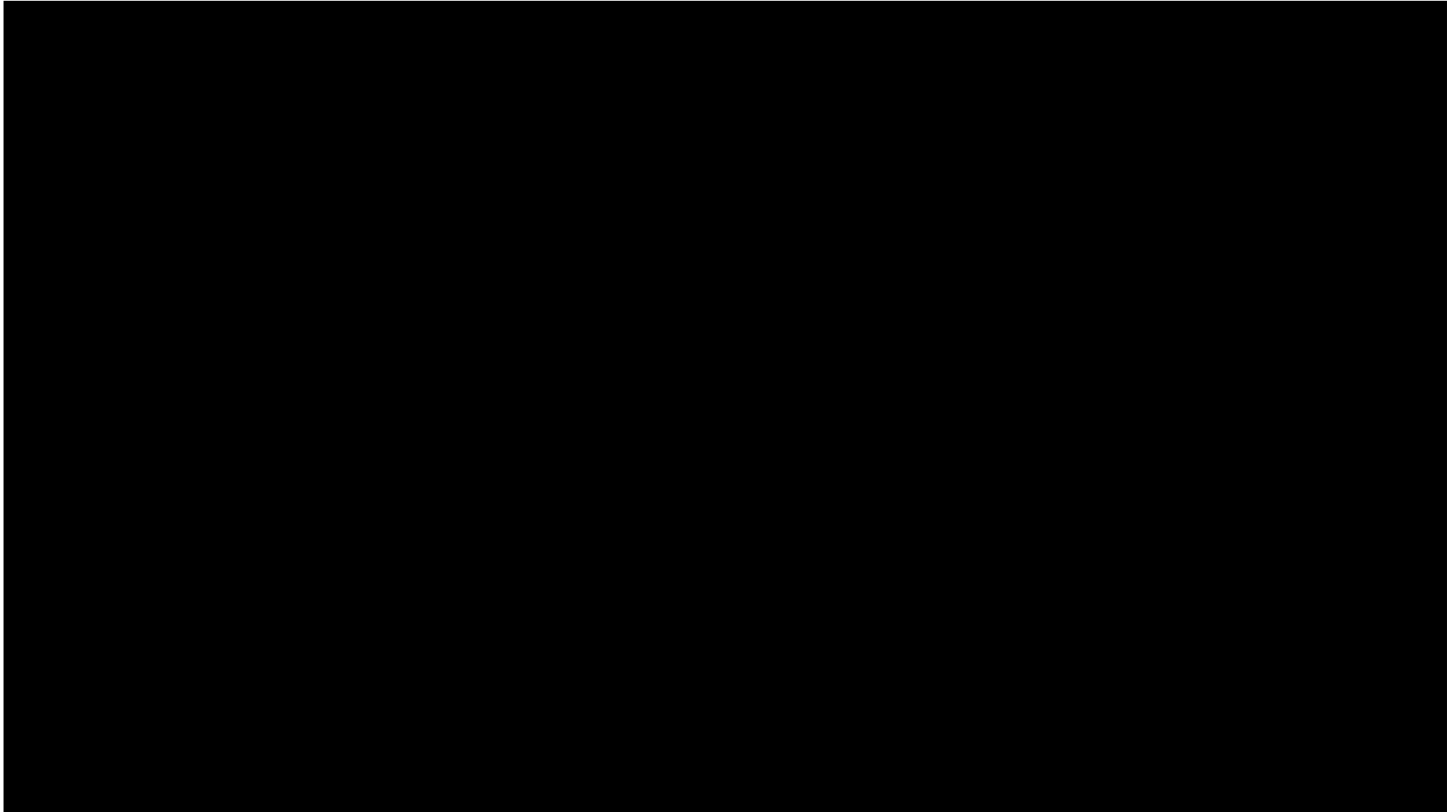
**The universe began to exist.**

**Therefore, the universe *has a cause*.**

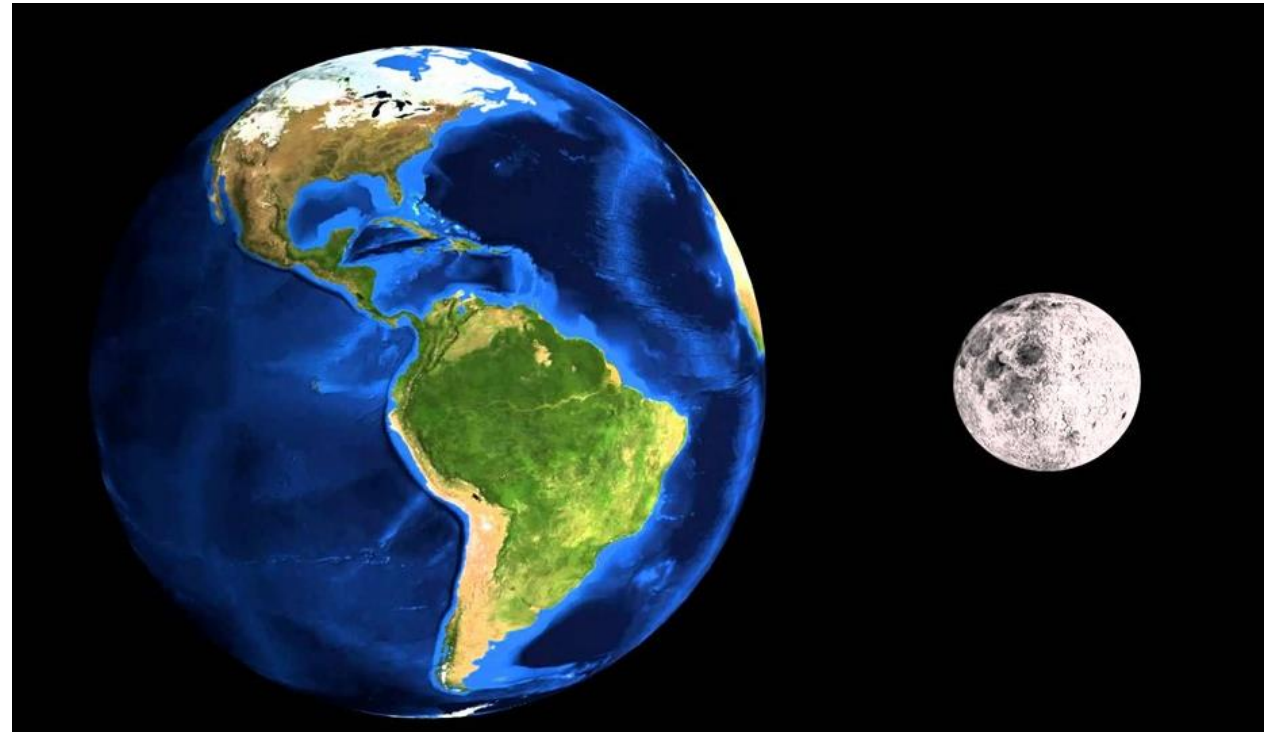
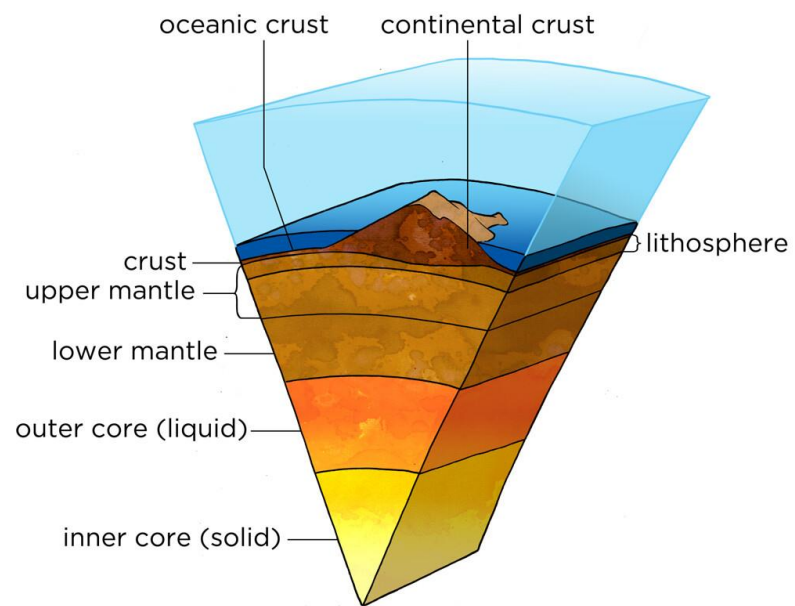
# FINE TUNING OF THE UNIVERSE

- The earth's relationship to the sun and moon
- The earth's atmospheric conditions
- The earth's terrestrial nature





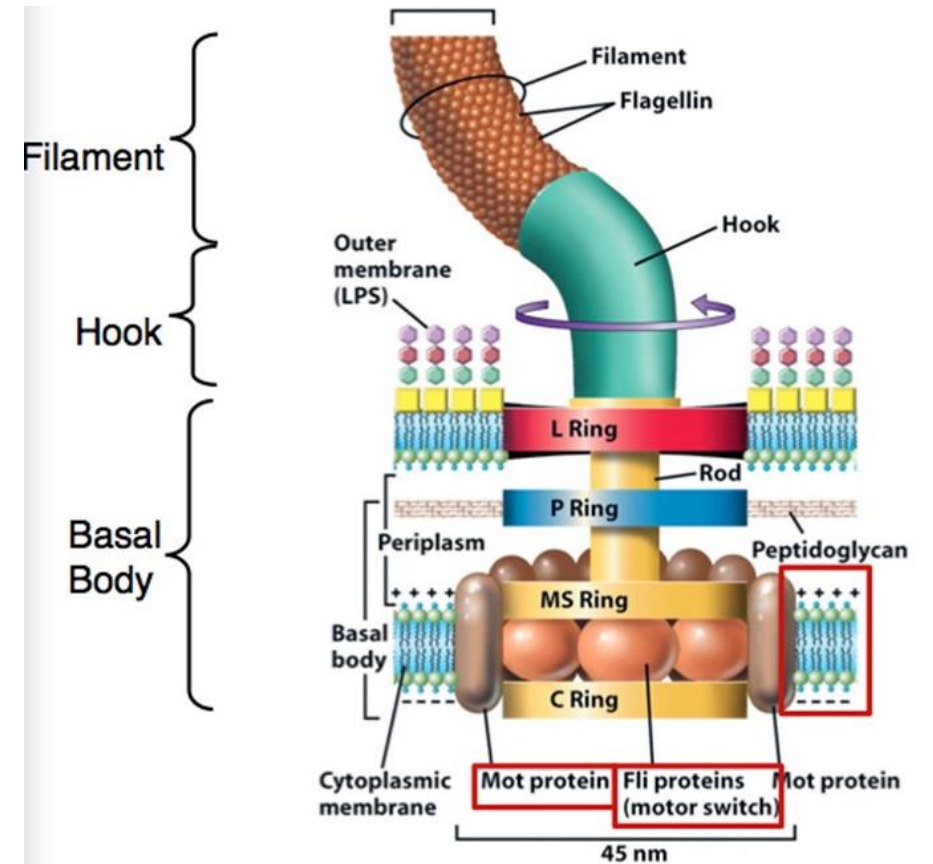
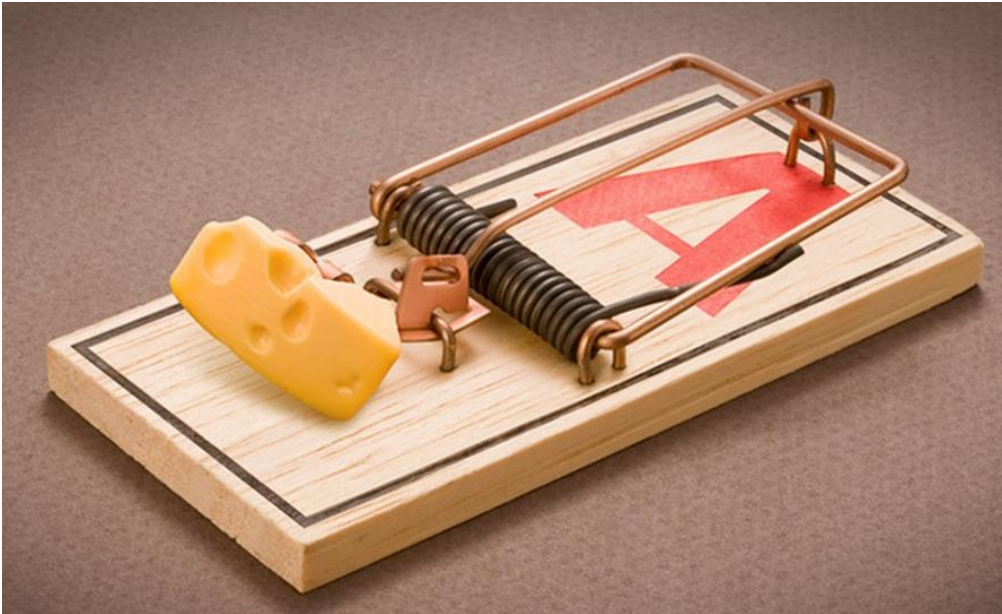
# FINE TUNING OF THE UNIVERSE



# IRREDUCIBLE COMPLEXITY

- A system made up of many well matched, interacting parts that contribute to the function of the system.
- Removing any one of these parts causes the system to stop functioning
- Examples; blood clots, bacterial flagellum

# IRREDUCIBLE COMPLEXITY



# SPECIFIED COMPLEXITY

- Does this show an identifiable pattern of design?
- Can it be produced by natural causes?
- Is it highly improbable?

# SPECIFIED COMPLEXITY





# ANTHROPIC PRINCIPLE

- The universe is uniquely designed for human life

