




BIOLOGY REVIEW

April 22, 2024



Adaptation

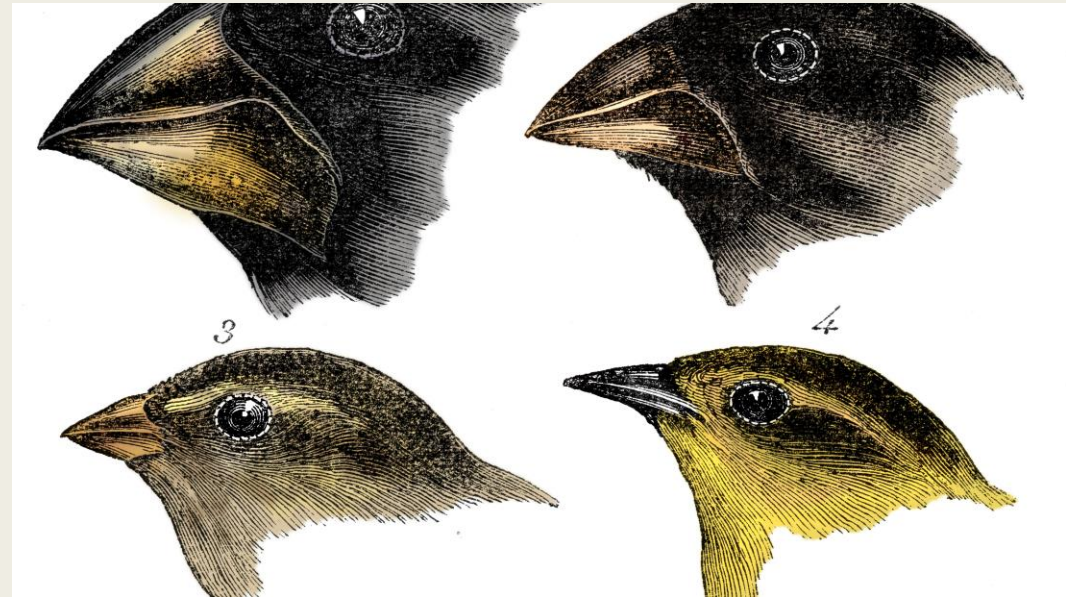
Natural Selection

- Only those life forms best suited to survive and reproduce will tend to do so.



Selective Breeding

- A guided process in which one is artificially selecting a beneficial trait



Secular definition of evolution

- In essence, the modern theory of evolution is easy to grasp. It can be summarized in a single (albeit slightly long) sentence. Life on earth evolved gradually beginning with one primitive species- perhaps a self-replicating molecule- that lived more than 3.5 billion years ago; it then branched out over time, throwing off many new and diverse species; and the mechanism for most (but not all) evolutionary change is natural selection.
- -Dr. Jerry Coyne
“Why Evolution is True”

Macro and Micro evolution

- Microevolution: living things incorporate small, adaptive changes over time.
- Secularists believe microevolution explains macro-evolution

Marxism

- Karl Marx believed Darwin's evolutionary theory justified his views of human society.
- If biological life evolved upward, perhaps sociological life does as well.
- Dialectical materialism: the clash between the thesis (bourgeoisie) and the anti-thesis (proletariat) results in a synthesis (a radical new government)

Christianity

- The view of biology revolves around origins.
- Christians believe in special creation; that at some point and at some level, life resulted from a creative act of God
- 2 questions; “Who am I?” and “How did I get here?”

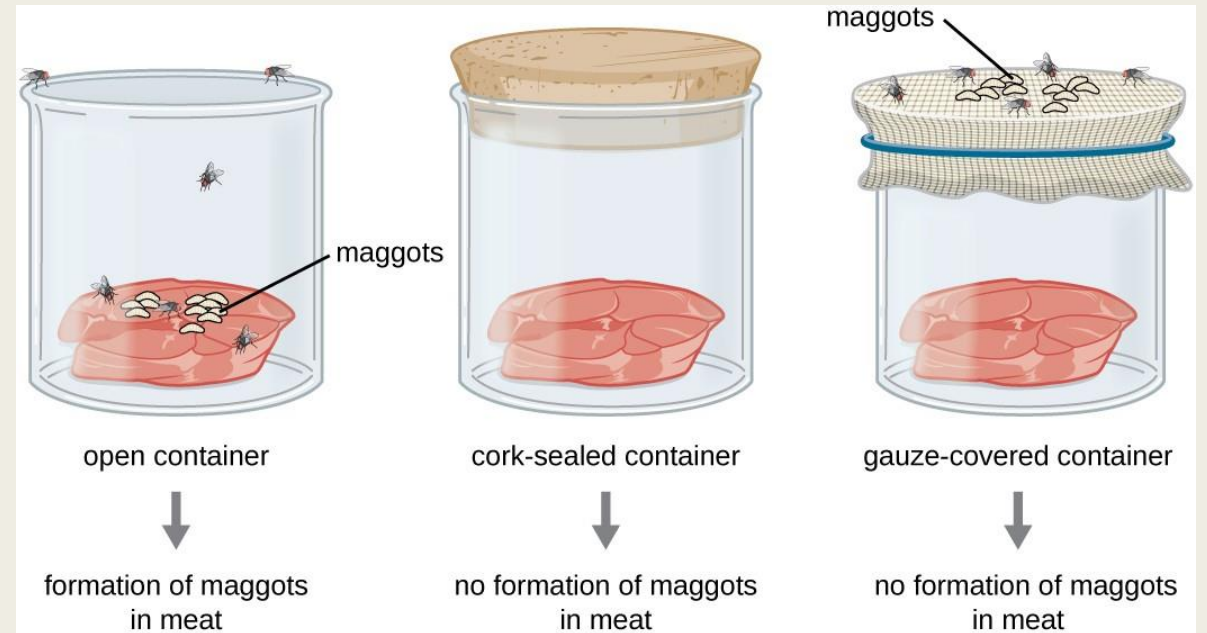
4 reasons to accept a Designer

- Life comes only from pre-existing life
- Random chance processes do not produce intelligible information
- The immaterial world is real
- Living organisms give the appearance of design

Life comes only from pre-existing life

► “Most chemists believe, as I do, that life emerged spontaneously from mixtures of molecules in the pre-biotic Earth. How? I have no idea.”

► -Harvard Chemist
► George Whiteside





Random chance
processes do not
produce intelligible
information

DR. STEPHEN C. MEYERS AND
THE SCRABBLE TILE EXAMPLE.

The immaterial world is real

► Mind precedes matter

► John 1:1

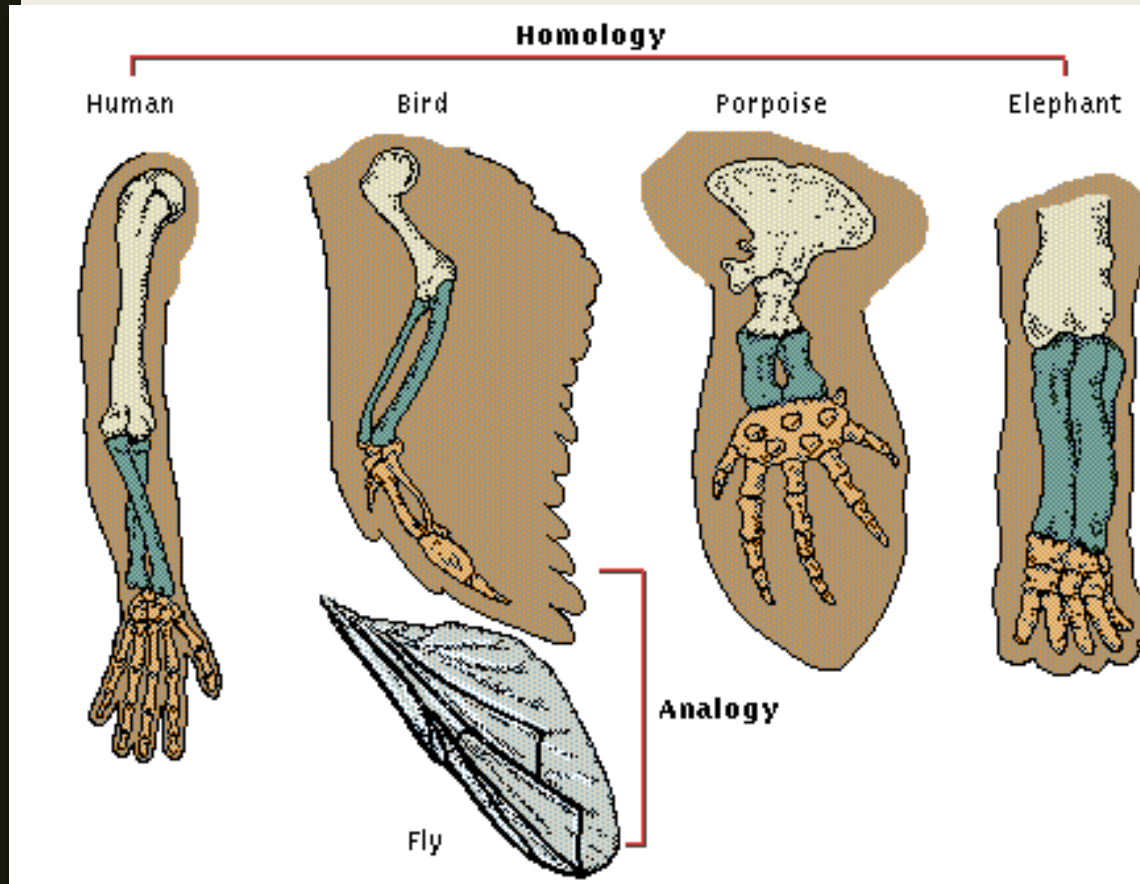


Living organisms give the appearance of design



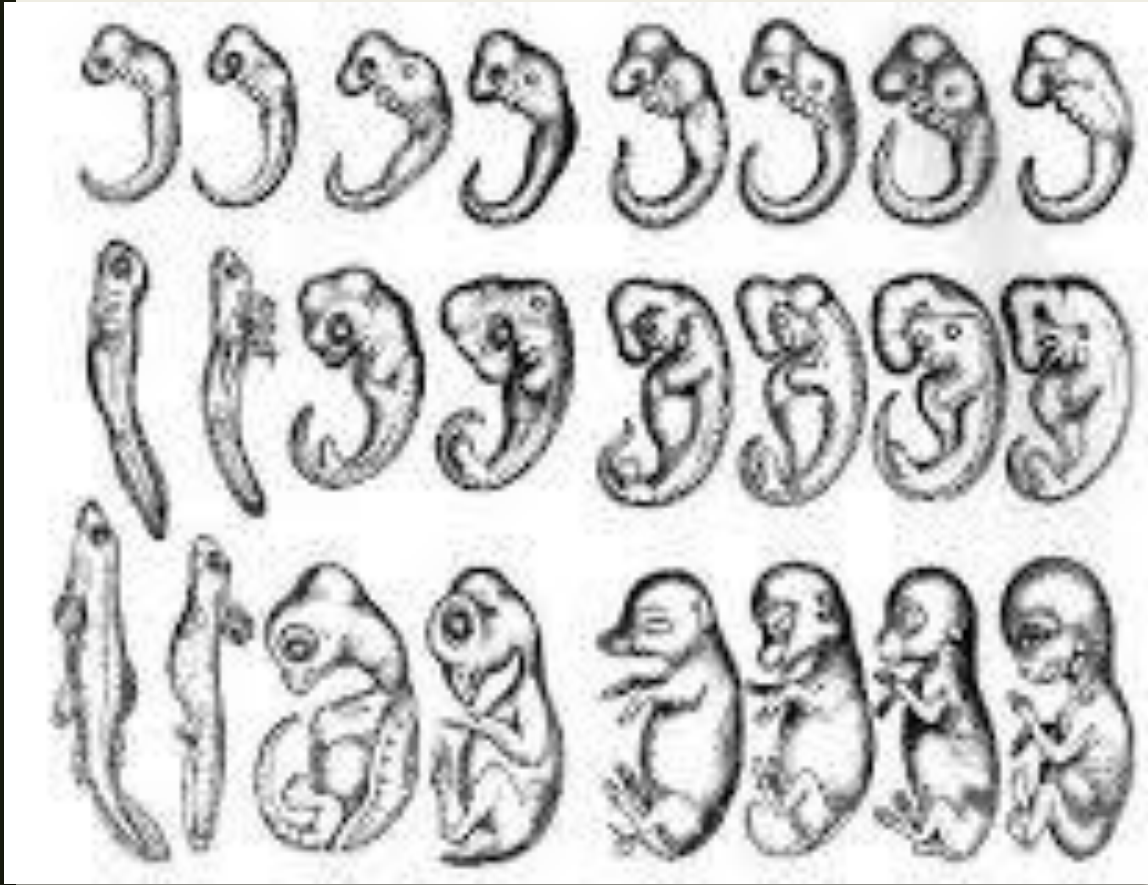
► “Biology is the study of complicated things that give the appearance of having been designed for a purpose.” Richard Dawkins

Homology



- ▶ Similar structures could also indicate one designer using similar structures
- ▶ Example: Cars

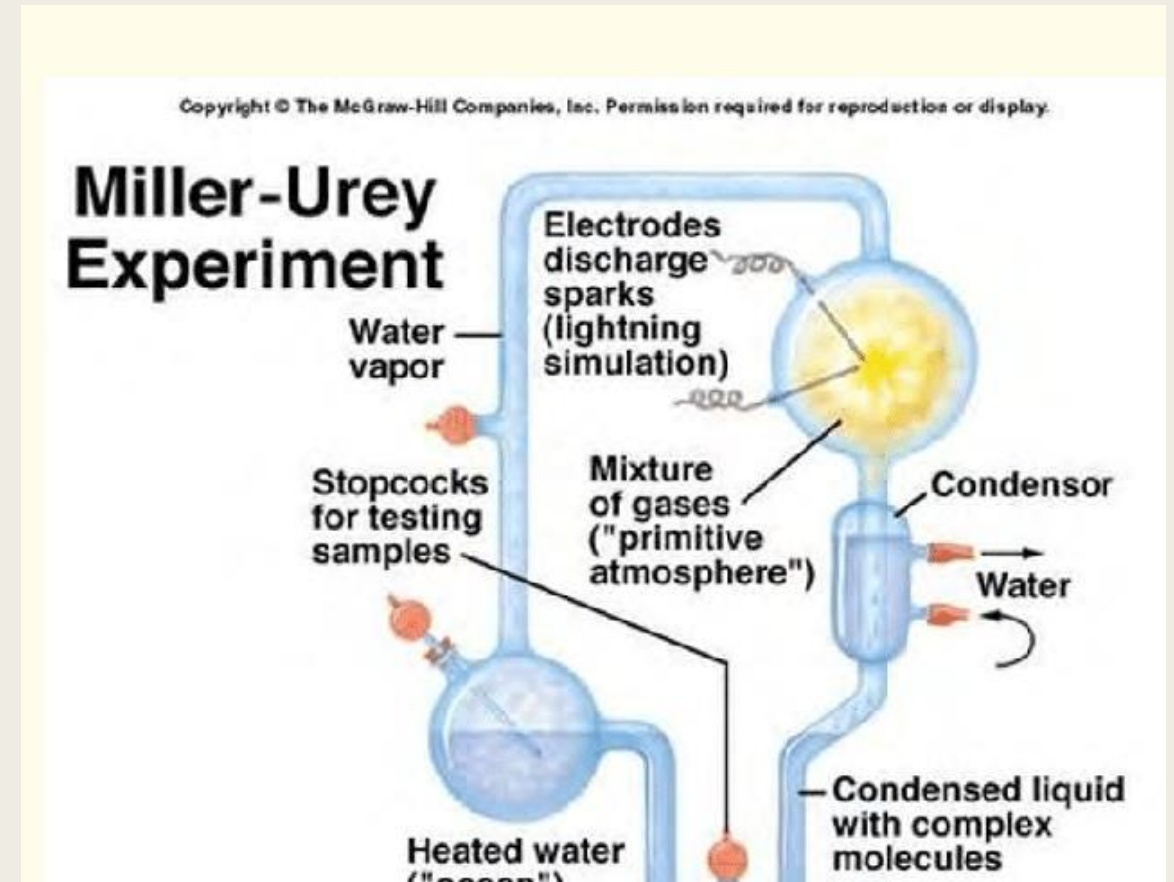
Haeckel's embryos



► The embryo drawings were altered to more closely resemble each other.

Miller-Urey

► It was a designed experiment and there was no evidence their “pre-biotic” soup ever existed. The early atmosphere was different than the gasses they used and amino acids are not life.



Darwin's Tree of Life

► According to this idea; we should see major bodily differences at the ends of a long evolutionary process., However, we see the Cambrian explosion at an earlier stage.

